

ARCHEOLOGICAL PROPERTIES POTENTIAL
FOR THE PROPOSED
SD17534-B RAPID CITY 7
COMMUNICATIONS TOWER

Pennington County, South Dakota

T2N, R8E, Section 31

by

Lance Rom

Quality Services, Inc. Project #SD391501030

June 15, 2015



Lance Rom
Principal Investigator

Quality Services, Inc.

Archeology, Forestry, Geophysics, History & Paleontology
1621 Sheridan Lake Road, Suite A
Rapid City, SD 57702-3432
Phone 605-388-5309
Fax 605-388-5319

Email: info@qualityservices.us.com
www.qualityservices.us.com



Table of Contents

| | |
|---|---|
| Table of Contents | i |
| List of Tables | i |
| List of Figures | i |
| Consultant Information | 1 |
| Tower Information | 1 |
| Determination of Effect | 1 |
| Additional Site Information | 1 |
| Tribal and NHO Involvement | 2 |
| Local Governments | 2 |
| Public Involvement | 2 |
| Other Consulting Parties | 3 |
| Area of Potential Effect | 3 |
| Cultural Resources Records Review | 3 |
| Cultural Resources Identified in the APE for Direct Effects | 4 |
| Photographs..... | 6 |
| Maps..... | 7 |

List of Tables

| | |
|---|---|
| Table 1. Archeological resources in the direct APE..... | 3 |
| Table 2. Archeological resources in the visual APE..... | 3 |
| Table 3. Previous inventories in the direct APE..... | 3 |

List of Figures

| | |
|--|---|
| Figure 1. Project plan..... | 2 |
| Figure 2. Aerial photo of project direct and visual APE..... | 5 |
| Figure 3. General location of proposed project within South Dakota. | 7 |
| Figure 4. SD17534-B Rapid City 7 Communications Tower..... | 8 |

Consultant Information

Legal Name of Applicant's Section 106 Consulting Firm: **Quality Services, Inc.**
Name and Title of Principal Investigator: Lance Rom, Archeologist
Investigator's Address: 1621 Sheridan Lake Rd., Suite A, Rapid City, South Dakota 57702-3432
Phone: (605) 388-5309 Fax: (605) 388-5319 E-mail Address: info@qualityservices.us.com
Does Principal Investigator meet Secretary of Interior Professional Qualifications? Yes
Areas of Professional Qualification: Archeologist

Tower Information

- a. Site address: 350 North Lacrosse Street, Rapid City, SD 57701
- b. Nearest Crossroads: Pine Street and East New York Street
- c. Tower height above ground level: 100 ft. with 10 ft. lightning rod
- d. Tower type: Monopole
- e. Current status: Construction has not yet commenced

Determination of Effect

**Previously disturbed - No archeological resources in direct area of potential effects (APE).
No known archeological resources in the visual APE.**

Additional Site Information

A 100 ft. monopole tower with a 10 ft. lightning rod will be located in a previously disturbed urban area. The tower lease area measures 40 ft. x 40 ft. and will contain a fenced compound including the tower and equipment shed. Utilities exist on the lot and will be routed to the tower lease along an existing utilities easement on the lot line. Access will be across existing paved and gravel surfaces. The entire project area has been leveled for construction of the existing auto body shop, and is covered in both gravel and asphalt pavement.

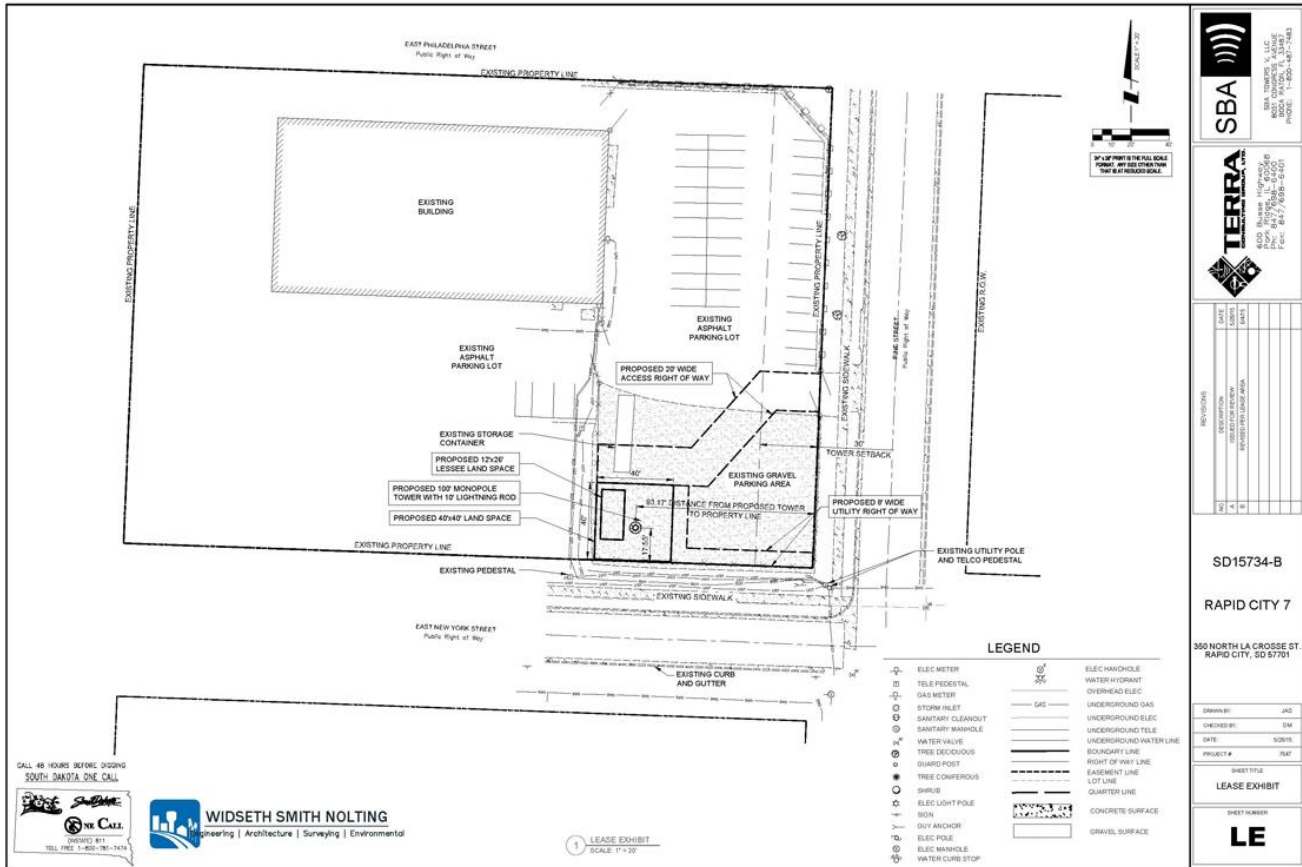


Figure 1. Project plan.

Tribal and NHO Involvement

Project information was entered into the Federal Communications Commission (FCC) Tower Construction Notification System (TCNS) by Ramaker & Associates, Inc. They will conduct follow up contacts according to FCC procedures.

Local Governments

Local governments are being contacted as needed by Ramaker & Associates, Inc. for any concerns they may have.

Public Involvement

Public notices will be sent as needed by Ramaker & Associates, Inc. and they will address any issues the public may have.

Other Consulting Parties

There are no additional consulting parties.

Area of Potential Effect

The APE for direct effects is limited to the area of potential ground disturbance and any property, or any portion thereof, that will be physically altered or destroyed by the undertaking (FCC04-222 pp. B16 Section VI.C.1). It was based on project maps provided by the client.

The APE for visual effects was determined to be 1/2 mile from the proposed project because the proposed project 200 ft. or less in overall height (see FCC04-222 pp. B17 Section VI.C.4).

Cultural Resources Records Review

This report covers only the potential for archeological resources to be within the proposed project areas of potential effect.

Section II.A.9 of the Nationwide Programmatic Agreement defines a “historic property” as: “Any prehistoric or historic district, site, building, structure, or object included in, or eligible for inclusion on, the National Register maintained by the Secretary of the Interior. This term includes artifacts, records, and remains that are related to and located within such properties. The term includes properties of traditional religious and cultural importance to an Indian tribe...that meet National Register criteria.”

Records search was conducted by **Quality Services, Inc.** GIS staff and archeologist Shawn French with the South Dakota State Historical Society on June 11, 2015. The National Register of Historic Places (NRHP) and National Historic Landmark online databases were also checked. The results are listed in the tables below.

Table 1. Archeological resources in the direct APE.

| ID# | Name/ Type | NRHP | Potential Effect |
|------|------------|------|------------------|
| None | N/A | N/A | N/A |

Table 2. Archeological resources in the visual APE.

| ID# | Name/ Type | NRHP | Potential Effect – Relationship to Project |
|------|------------|------|--|
| None | N/A | N/A | N/A |

Table 3. Previous inventories in the direct APE.

| Resource# | Author(s) | Year | Title |
|-----------|-----------|------|-------|
| None | N/A | N/A | N/A |

Cultural Resources Identified in the APE for Direct Effects

No archeological fieldwork was conducted. The record search data (above) indicates there are no known archeological resources within either the direct or visual APEs for this project.

The project area is located in a completely disturbed urban context (see photos below). The entire area has been previously disturbed by construction of utilities, parking lots, installation of immediately adjacent buildings, as well as landscaping.

Natural Resources Conservation Services soils data indicates the proposed project is completely within the Santanta Urban Land Context soils, on 0 to 1 percent slopes. This component is on plains on uplands. The parent material consists of eolian deposits. The natural drainage class is well drained. Water movement in the most restrictive layer is moderately high. Available water to a depth of 60 inches is high. Shrink-swell potential is low. This soil is not flooded. Organic matter content in the surface horizon is about 2 percent. This soil does not meet hydric criteria. The calcium carbonate equivalent within 40 inches, typically, does not exceed 9 percent. The soil has a slightly sodic horizon within 30 inches of the soil surface.

This project location is about 1/2 mile northeast of the Rapid Creek. Cultural resources potential would be significantly higher closer to Rapid Creek.

Even though the soil in the direct APE has some potential for historic or prehistoric cultural resources, the previous disturbance indicated above and shown in the project photos and aerial photo below, would have destroyed any cultural resources present.

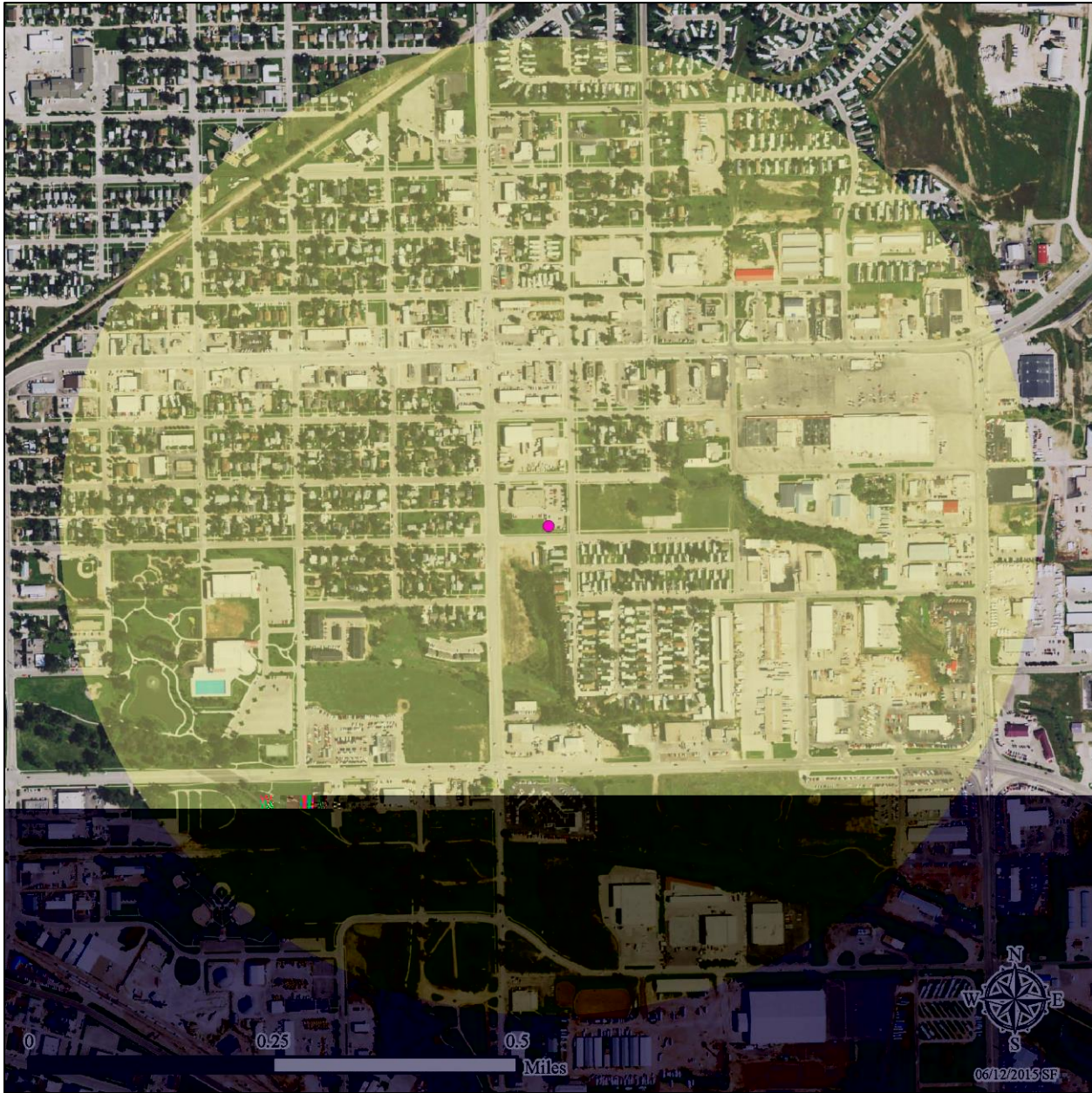


Figure 2. Aerial photo of project direct and visual APE.

Proposed tower location/Direct APE is shown as pink dot. Yellow highlight is the visual APE.

Note area is previously disturbed by urban development.

No archeological resources are previously recorded present within the direct or visual APEs and the direct APE has been completely disturbed.

Photographs

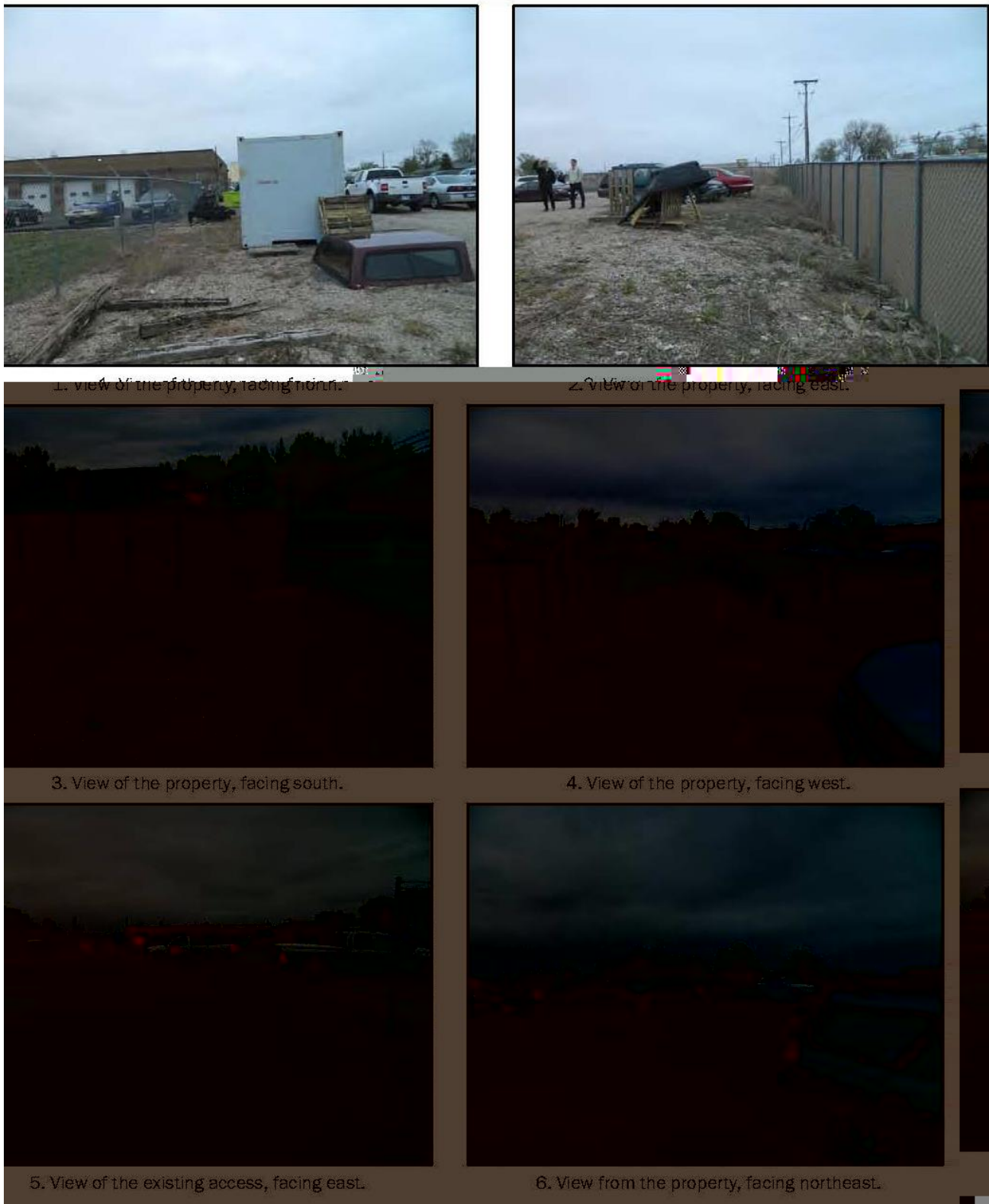


Figure 3. Photos of the direct APE.

Maps



Figure 3. General location of proposed project within South Dakota.

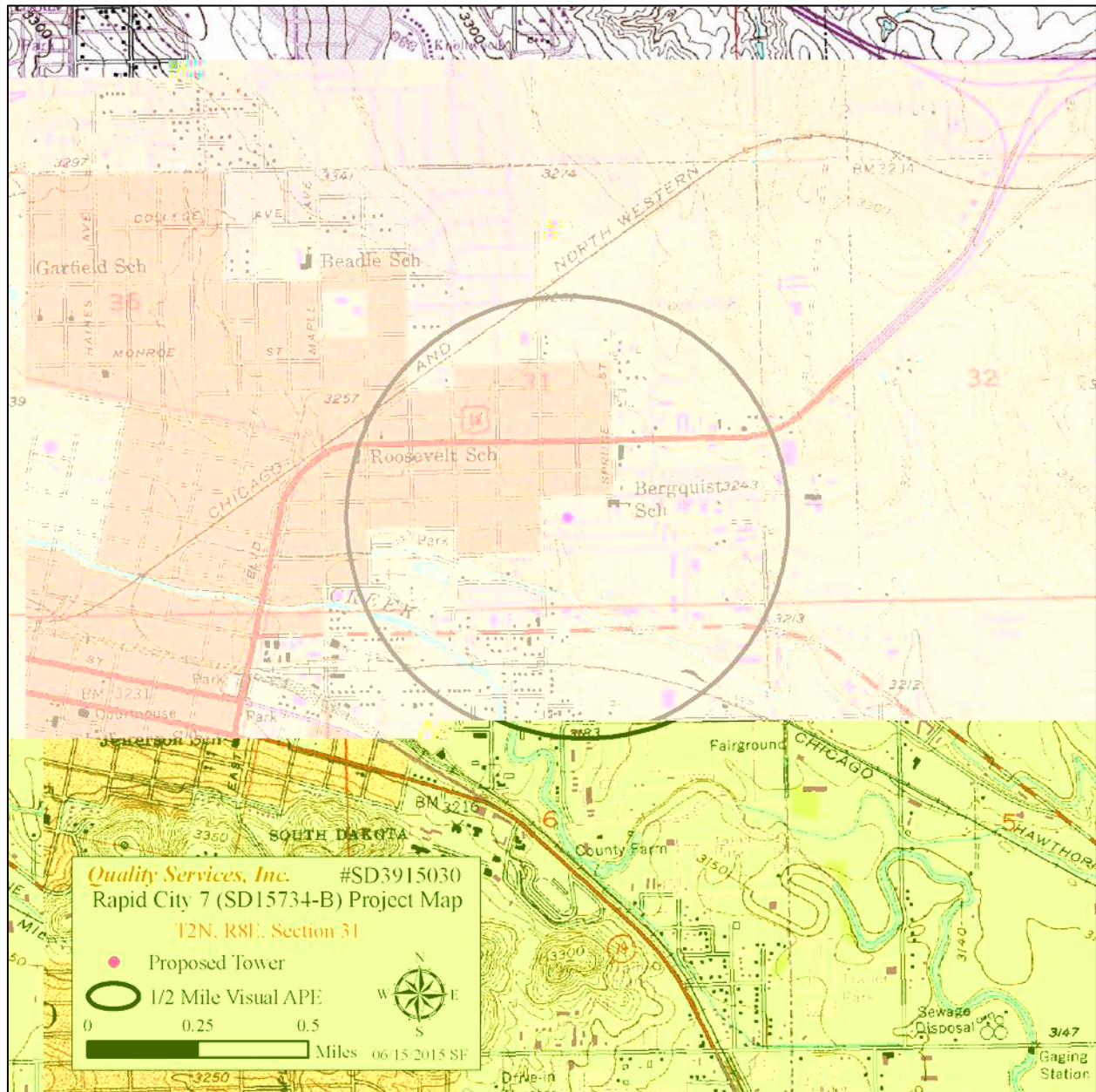


Figure 4. SD17534-B Rapid City 7 Communications Tower
T2N, R8E, Section 31, Pennington County, South Dakota
USGS 7.5' Rapid City, South Dakota topographic quadrangle